

2 Timothy 4:1-5

Special points of interest:

- Facing the Giants
- Pilgrim's Progress

REMINDERS

- Turn in applications to start enrollment process.
- Application for the Spring Retreat are due ASAP.
- Tuition for previous semester is due NLT May 18.
- Check out our website at ccsfamily.org for changes and updates.

On Campus

Facing the Giants

Recently my family and I had the opportunity to watch "Facing the Giants" together. I can't say enough about the movie and the ministry of Sherwood Baptist Church for putting it together.

Many things in that movie spoke to me and have stirred up excitement in me to act on my faith. One thing spoke to me more than others. There is a scene in the movie when the coach receives godly wisdom from another brother who prays daily for the students by walking up and down the corridors of the school and touching each locker to pray for that student. The man talks about two farmers who both prayed to God that rain would

Pilgrim's Progress

Pilgrim's Progress by John Bunyan is a familiar story to most of our students and parents. When Laurie Kincaid, our Drama Director, discovered there was a screenplay for it, her excitement soon became the entire schools. Sarah Lakota became our music director and we found ourselves undertaking a musical. Auditions, then tryouts were held during our January break and rehearsals soon followed. It was amazing to see how easily casting the play became. Every-

one got a place in this excellent musical and each role was assumed masterfully. The production opened on May 4th for family and friends and after months of rehearsals, music practices and details, details, details, the opening night was upon us. If you haven't read the book yourself, the story is about Christian's (Caleb Curd) journey to the Celestial City. *The story is a metaphor of the Christian life.* Along the way Christian encour-

come so they would have a plentiful harvest. He further talks about the one farmer who went out and began planting. He asked the question to the coach, "Which farmer demonstrated a greater faith?" to which the coach replied, "the one who planted his seeds". The brother then asked, "which one are you?"

This story and line of questions was centered around a verse that the man shared with the coach (Revelation 3:7). "These are the words of him who is holy and true, who holds the key of David. What he opens no one can shut, and what he shuts no one can open."

Volume 3, Issue 1

Spring 2007



We have a wonderful parent and trustee who has been praying that verse into my life for a while and she reminds me of it constantly. Unfortunately I haven't thought much about her godly counsel until that verse woke me up to the work God is doing in my life.

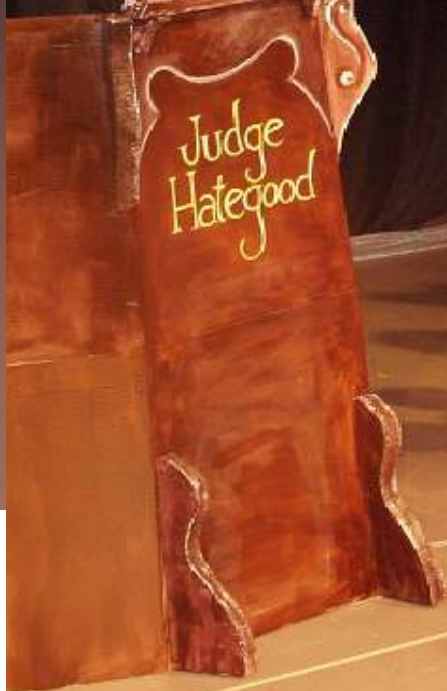
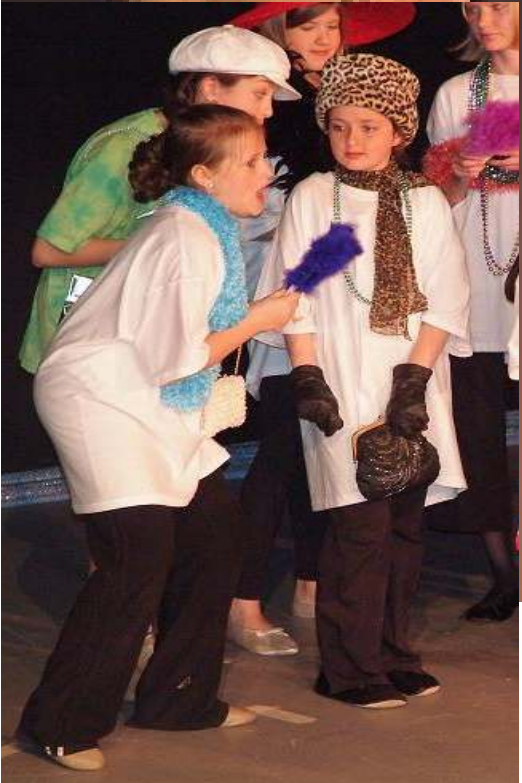
Going forward is the direction God wants for us. I have heard it said that God doesn't move parked cars. He wants us to get in, start the engine, and trust Him for the directions.

This school is a testimony about yielding to God's direction. We just have to be willing to open ourselves up to His will "...His good pleasing and perfect will."

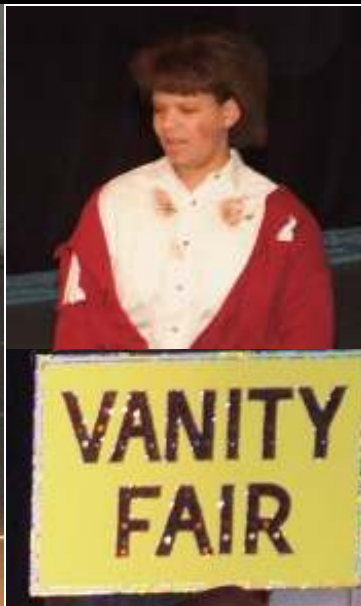
ters helpful people like, Evangelist (Jordan Cree), Faithful (Lucy Benoit), Hopeful, (Payton Gobeille); and not so helpful ones like his wife (Melissa Chalker), Worldly Wisdom (Tim Weiner), Talkative (Olivia Curd), Judge Hategood, Gavi Greenspan, Giant Despair (Jered Grabowski) and the Witch (Lauren Bourgault). We wish to thank all who have made this production possible, from the cast to the parents and all the other supporters. Thank you.

See collage on pages 2 and 3.

"...Pilgrim's go



otta progress!"



VANITY FAIR

COMMUNITY CHRISTIAN SCHOOL
157 DARTMOUTH STREET
WESTFIELD, MA

Mailing Address:

PO Box 447
Westfield, MA
01086-0447

Phone: 413-564-0316
Fax: 413-564-0317
Email: CommunityChristianSchool@verizon.net
www.ccsfamily.org

MEET OUR BOARD

Sylvia Wallis	Founder
Cherrie Benoit	Trustee
Chris Dolan	Chairman of the Board
Bob Cree	Co-Chairman
Vacant	Treasurer
Mary Bourgault	Secretary
Karen Cree	
Jen Dolan	
Misha Gregorian	Chaplain

Important Dates to Remember

Friday	May 4	Opening of Pilgrim's Progress
Friday and Saturday	May 11+12	Public Performance of Pilgrim's Progress
Monday	May 14	Information Meeting
Monday – Friday	May 21-25	Finals week
Monday	May 28	Memorial Day parade and CCS cookout
Wednesday - Friday	May 30 - June 1	Student Retreat to NH
Monday and Wednesday	June 4+6/18+20	Placement Testing/Parent Training
Monday	June 11	Open House/Info Meeting
Saturday	June 30	New Student Early Registration
Friday	August 17	New Student Orientation
Monday	August 20	Opening Day of Classes
Friday	August 24	First Semester Add/Drop Day